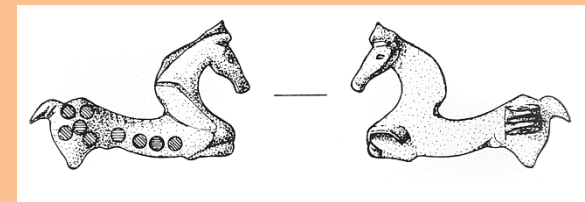
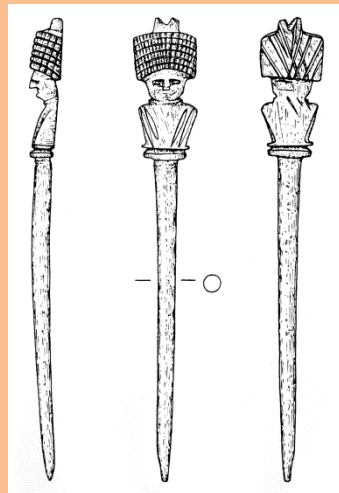
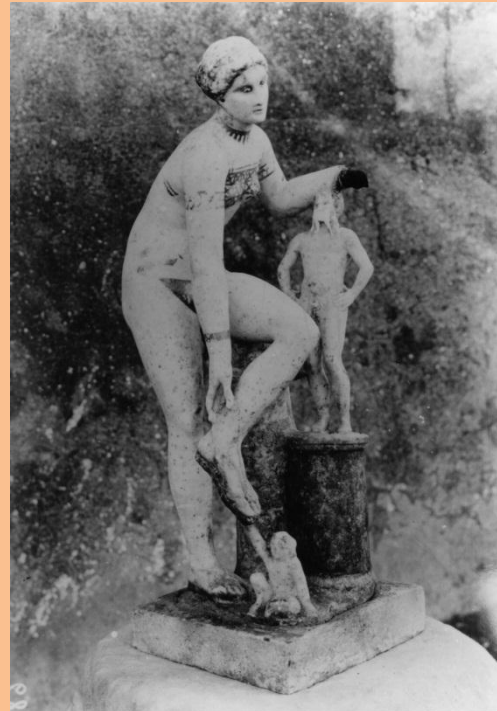


Artefacts and Social Identity



Penelope Allison

School of Archaeology and Ancient History



Projects based on Pompeian Data

Current PhD candidates, Univ. of Leicester

David Griffiths –

‘The social and economic impact of artificial light in the Roman world’

Carla Brain –

‘The Landscape of Pompeian religion in public and private space and practice’

Projects based on Pompeian Data

Nick Ray (PhD, University of Leicester)

‘Household Consumption in Ancient Economies: Pompeii and the wider Roman world’

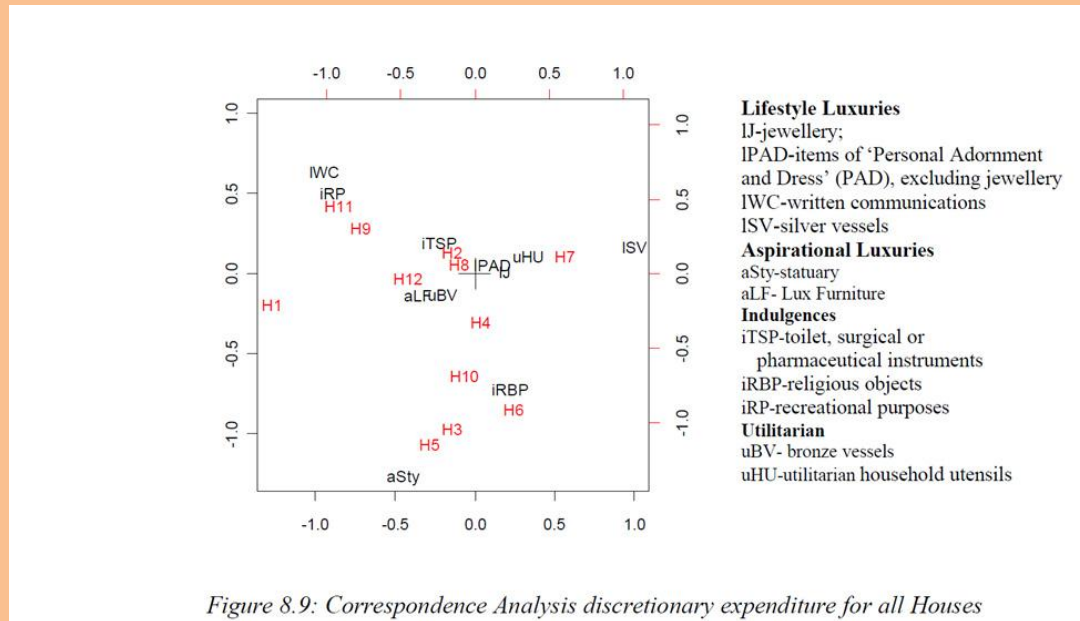
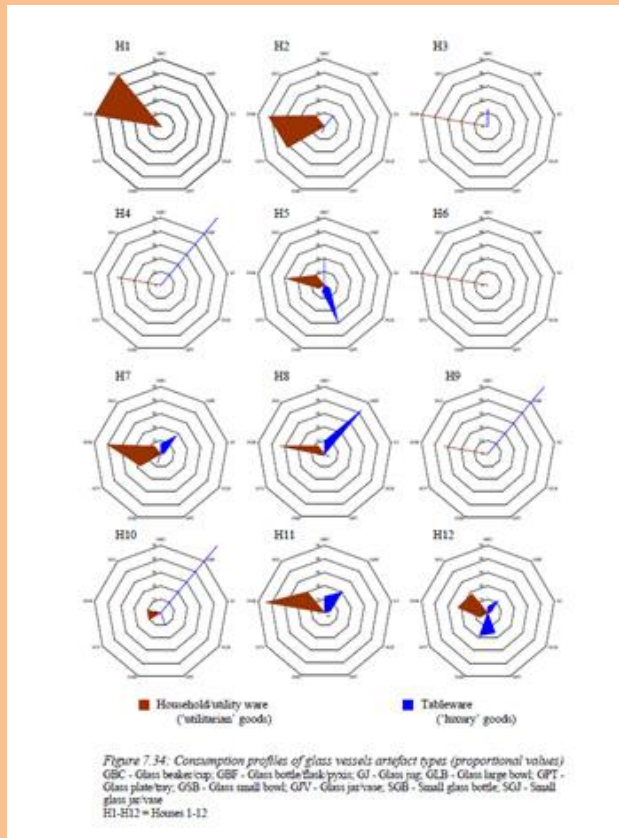


Figure 8.9: Correspondence Analysis discretionary expenditure for all Houses

Correspondence analyses of luxuries

Consumption profiles of glassware – luxury v. utilitarian

Projects based on Pompeian Data

David Mimno – Dept. of Computer-Science, Princeton University

‘Reconstructing Pompeian Households’

- Bayesian mixed-membership modelling

Abstract

A database of objects discovered in houses in the Roman city of Pompeii provides a unique view of ordinary life in an ancient city. Experts have used this collection to study the structure of Roman households, exploring the distribution and variability of tasks in architectural spaces, but such approaches are necessarily affected by modern cultural assumptions. In this study we present a data-driven approach to household archeology, treating it as an unsupervised labeling problem. This approach scales to large data sets and provides a more objective complement to human interpretation.

Mimno – some results

Table 5: Objects most likely to occur with bronze casseruola, marginalized over 20 functional groups ("topics"): the first item associated with food preparation (found in kitchens with evidence of exposure to fire) is well down the list.

Bronze casseruola

- 0.00036 door/chest/cupboard fitting
- 0.00035 glass bottle/flask/pyxis
- 0.00028 small glass bottle
- 0.00026 pottery jug
- 0.00024 bronze jug/jug fragment
- 0.00022 chest/cupboard fitting
- 0.00020 ceramic lamp
- 0.00018 jewelry
- 0.00016 pottery beaker/small vase
- 0.00015 coin
- 0.00013 pottery pot
- 0.00010 table/table fittings/table base
- 0.00010 pottery jar/vase
- 0.00010 bronze cooking pot/basin/pot/fragment



Mimno – some results

Conclusions

Our results are consistent with Allison's challenge to assumptions that small closed rooms (cubicula) were used for sleeping and that two object types (casseruola and forma di pasticceria) were used in food preparation.

Dear Dr. Allison:

I wanted to thank you for all of your work on Roman households in Pompeii. I am a PhD student at the University of Washington and I am currently writing my dissertation on Roman attitudes about bodily functions and how those attitudes influenced daily practices and domestic hierarchies. While doing research on homes in Pompeii last spring and this winter, your website and book on Pompeian houses in addition to your volume on the Insula of the Menander have been my constant companions. I just wanted to let you how grateful I have been for your careful and detailed work and how much it assists me as I am writing my dissertation.

Thank you again,

[NAME]

PhD Candidate

University of Washington

History Department

Smith 315, Box 353560

Seattle, WA, 98195

mirag@uw.edu

206-979-2677

8/5/2012

Dear Pim,

.... I am sending you the information about a colloquium we are organizing for 1 and 2 december... [we] are going to analyze storage in Pompei from a quantitative point of view, so we are going to work with your database, which has proved to be an excellent instrumentum for our research! We will talk about your webpage there and the importance of your work there!

[NAME]

Consejo Superior de Investigaciones Científicas

Centro de Ciencias Humanas y Sociales

Instituto de Historia

c/ Albasanz 26-28.

Despacho 2E14

E-28037 Madrid (SPAIN)

(0034) 91.602.28.74

<http://www.materialculturelivingconditions.com/>

(email 21/11/211)

Sample of Activity and Artifact Use Categories, and Alternatives

| Activities | Activity alternatives | Artifact use | Artifact use—refined |
|-------------------------|---|---|---|
| Drinking | | Alcohol/aerated waters | Alcohol - (beer); (wine); (beer or wine); (spirits); (spirits—gin); (spirits—schnapps); (spirits—whiskey) |
| Eating | Eating/drinking Eating/storage Eating/drinking/storage Eating or display Eating/unidentified | Tableware; teaware; serving tableware/ food storage tableware/serving tableware/food storage tableware/teaware tableware/teaware/serving | Tableware/serving—meat |
| Personal hygiene/health | Personal hygiene/health/appearances personal hygiene/health/eating/display personal hygiene/health or drinking personal hygiene/health or food prep. personal hygiene/health/household hygiene personal hygiene/health/unknown | Toiletries; shaving; medicine; medicine/chemical/toiletries Domestic poison/ medicine/chemical medicine/chemical/alcohol (spirit) tableware/toiletries tableware/serving/toiletries | |
| | | | |

| Supplier | Supplier/order date | Transport | | Household item |
|--------------------|---------------------|-----------|------------------|--|
| | | Ship | Rail | Road |
| Harris Scarfe & Co | 15/5/1891 | | Rail to BrokHill | forks, table 5534, 4 Doz stationery kerosine, 3 cases, 24 galls |
| Harris Scarfe & Co | 18/05/1891 | | n/i | 0 |
| Butterworth & Co | 15/5/1891 | | Burra- BrokHill | flour, roller, 2½ tons |
| Harris Scarfe & Co | 14/5/1891 | | rail charges | 0 |
| D&W Murray | 14/05/1891 | | n/i | calico, grey, 8/4, 59½ yds |
| D&J Fowler | 16/05/1891 | | n/i | sugar, 41 mats, 11 sacks |
| | | | | sugar, Gran, 2 mats |
| | | | | salt, Castle, 10 bags |
| | | | | tobacco, B.S., 1 case |
| | | | | Currants, 3 cases |
| | | | | Elemes, 3 boxes |
| | | | | Maizena, 1 box |
| | | | | Jams, Kimbers, 3 cases |
| | | | | Rice, Japan, 2 bags |
| | | | | Apples, dried, 1 case |
| | | | | Sperms, D.R.O., 2 boxes |
| | | | | Vestas, 250, 2 cases |
| | | | | Oatmeal, 16/7s, 1 bag |
| | | | | Tea, Chittagong, 5½ chests |
| | | | | Soap, Burfords No 2 5 boxes |
| | | | | curry, D.C. quanl 1 case |
| | | | | vinegar, B.S., 1 cask |
| | | | | baking powder, Lion, 2 cases |
| | | | | Bickfords Elixir 2 doz |
| | | | | Lion Eucalyptus 2 doz |
| | | | | Pipes, assorted, 1 gross |
| | | | | Mustard, D.S.F. 1box ½lb |
| | | | | white pepper, ½lb tins, 6 doz |
| | | | | sauce, L&P ½ pt, 3 doz |
| | | | | tomato sauce, Hutchinsons |
| | | | | coffee, S.Cross 30 1 lb tins |

| Supplier | Supplier/order date | Household item |
|------------------------|---------------------|--|
| Presl&Hocking BrokHill | 31/07/1895 | plates, ½ doz |
| | | cups & saucers, W&G, ¼doz |
| | | teapot, 1 |
| | | cruet, breakfast, 1 |
| | | |
| T. Reid, BrokHill | 22/09/1896 | cups & saucers, W&G, 1 doz |
| | | |
| J.Ritson, BrokHill | 23/02/1900 | spoons, table, 1 doz |
| | | gravy boat |
| | | |
| J.Ritson, BrokHill | July 1901 | jugs, 2 |
| | | jugs, glass, 2 |
| | | mustard bottle |
| | | cups, tea, gold r?d ½doz |
| | | |
| T. Reid, BrokHill | 11/02/1903 | dishes, meat, 2 (Kars) |
| | | dishes, jam, 2 (Kars) 1/3 1/6 |
| | | cups&saucers, ½doz |
| | | |
| T. Reid, BrokHill | 17/06/1905 | cups&saucers, Blue Band, 1 doz |
| | | cups&saucers, White&Gold, ½ doz |
| | | plates, dinner, blue lined, 1 doz |
| | | plates, dinner, blue lined, small, 1 doz |

Social approaches in archaeology

- What and who on-line resources are for?
- Questions of standardisation?